



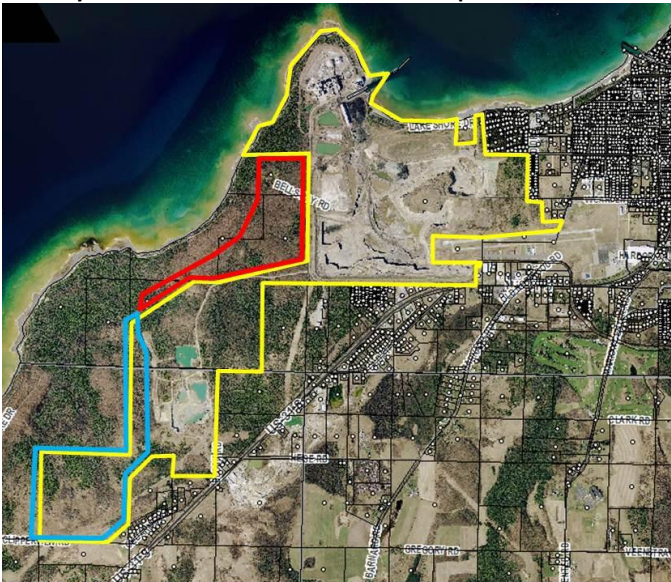
Fisherman's Island State Park Bells Bay Rd. Overlook

## SAVE FISHERMAN'S ISLAND STATE PARK

The Mission of Friends of Fisherman's Island State Park is to conserve and protect the natural beauty, character, environmental quality and sustainable use of Fisherman's Island State Park for current and future generations.

- \* We oppose the closing and mining of Bells Bay County Road, the taking of our Bells Bay Road Public Overlook and Parking and our access to Lake Michigan and Trails.
- \* We oppose the swapping of 190 acres of Fisherman's Island State Park Forest Land to St. Mary's for mining.
- \* We oppose blocking access to Lake MI via Bells Bay Road to the Charlevoix Lake to Lake Trail Multi-Use Trail.
- \* We oppose the "swap". The Norwood Twp parcel is not equitable in economic value or viable recreation use and would diminish tourism/urban recreation opportunities.

St. Mary's Cement wants the 190 acre Chx Twp. State Park Land in red.



St. Mary's Cement wants to "swap" their +/- 210 acres in turquoise

**STOP THE "SWAP"**  
Write DNR Director Keith Creagh

## History of Fisherman's Island and the "Concept"

1. The Northern entrance and campground of Fisherman's Island State Park (Bells Bay) has been a place of outdoor beauty and recreation **open to the public since 1923**. The area is on the **National Register of Historic Places** as an 8,500 BCE Woodland Indian site with cultural and archaeological significance.
2. FISP contains 2,678 acres of land in Norwood and Chx. Twps.
3. All of Fisherman's Island State Park is encumbered (**protected**) by a contract between the State of MI and the Federal Gov't. "The Director, as well as other DNR staff involved, have been informed that the parcel is encumbered in a 6(f)3 LWCF boundary.... The entire park became encumbered in 1975 when DNR's Parks and Recreation Division received a LWCF grant (26-00590) to acquire 1,521 acres in another portion of the park. As stated in the LWCF manual, when funding is provided for acquisition in a park, the entire park becomes encumbered regardless of how it was acquired." Steve Debrabander Manager Grants Management Section, DNR 4/25/14
4. St Mary's Cement (Votorantim Cimentos of Brazil) wants to acquire minable "product" within the State Park in Chx. Twp. The St Mary's concept proposes to **strip mine** approx. 1/3 mile of **Bells Bay County Rd. and 190 acres of favorite diverse beautiful forest** within the Fisherman's Island State Park Boundary.
5. St Mary's concept proposes **closing Bells Bay Road, the Public Road-end Overlook, the Chx. Twp. entrance to Fisherman's Island, the free Public Parking area** and blocking the **Chx. Twp. link to Lake MI by the new Chx. Lake to Lake Multi-Use Trail**.
6. St. Mary's proposes to **move the entrance** to the State Park **over 3 miles south**, and replace the State Park Forest land with an inland field and bermed sliver of creek in Norwood Township.

## What you can do: (GET OUT THE PHONEBOOK!)

1. **Educate yourself.** Say "NO!" to the "concept".
2. **Sign the on-line petition** at: [savefishermansisland.org](http://savefishermansisland.org)
3. **Write to DNR Director Keith Creagh:**  
Executive Division, PO Box 30028, Lansing MI 48909
4. **Call your County Commissioners and Road Commission.** NO closing or abandoning of Bells Bay Road, a county road. NO closing the Public Bells Bay Road-end Scenic Overlook.
5. **Call your Chx. City Council Reps.** Ask them to speak out to protect the campground, overlook and near city entrance to FISP.
6. **Write and Call Charlevoix Township Supervisor and Board.** Tell them not to rezone Fisherman's Island State Park to Mining District. Protect the whole 450 acres of Fisherman's Island State Park in Charlevoix Township. **Do not allow St. Mary's to quarry 190 acres of our State Park.** Keep Bells Bay Road OPEN.
7. **Call US Senators Carl Levin and Debbie Stabenow.** Tell them to protect the National Park Service investment in FISP.



Every acre is Precious! Protect ALL of FISP!

Join us on Facebook: [SaveFishermansIslandStatePark](https://www.facebook.com/SaveFishermansIslandStatePark)

Web-site: <http://savefishermansisland.org/>